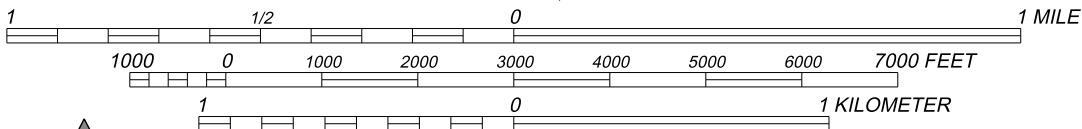
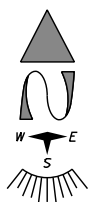


SCALE 1:24,000



CONTOUR INTERVAL 20 FEET  
NATIONAL GEODETIC VERTICAL DATUM OF 1988



GEOGRAPHIC COORDINATE-  
LATITUDE: N. 39° 42' 38.17"  
LONGITUDE: W. 82° 12' 32.82"  
HORIZONTAL DATUM: NAD83

USGS 7.5 MINUTE SERIES (U.S. TOPO)  
QUADRANGLE:

NEW LEXINGTON, OHIO 2019



QUADRANGLE  
LOCATION



1000 S. Cleveland-Massillon Rd.  
Suite 106  
Akron, OH 44333  
Phone: (330) 668-4600  
Fax (330) 668-8464

### Figure 1 - Site Location on U.S.G.S. Topographic Map

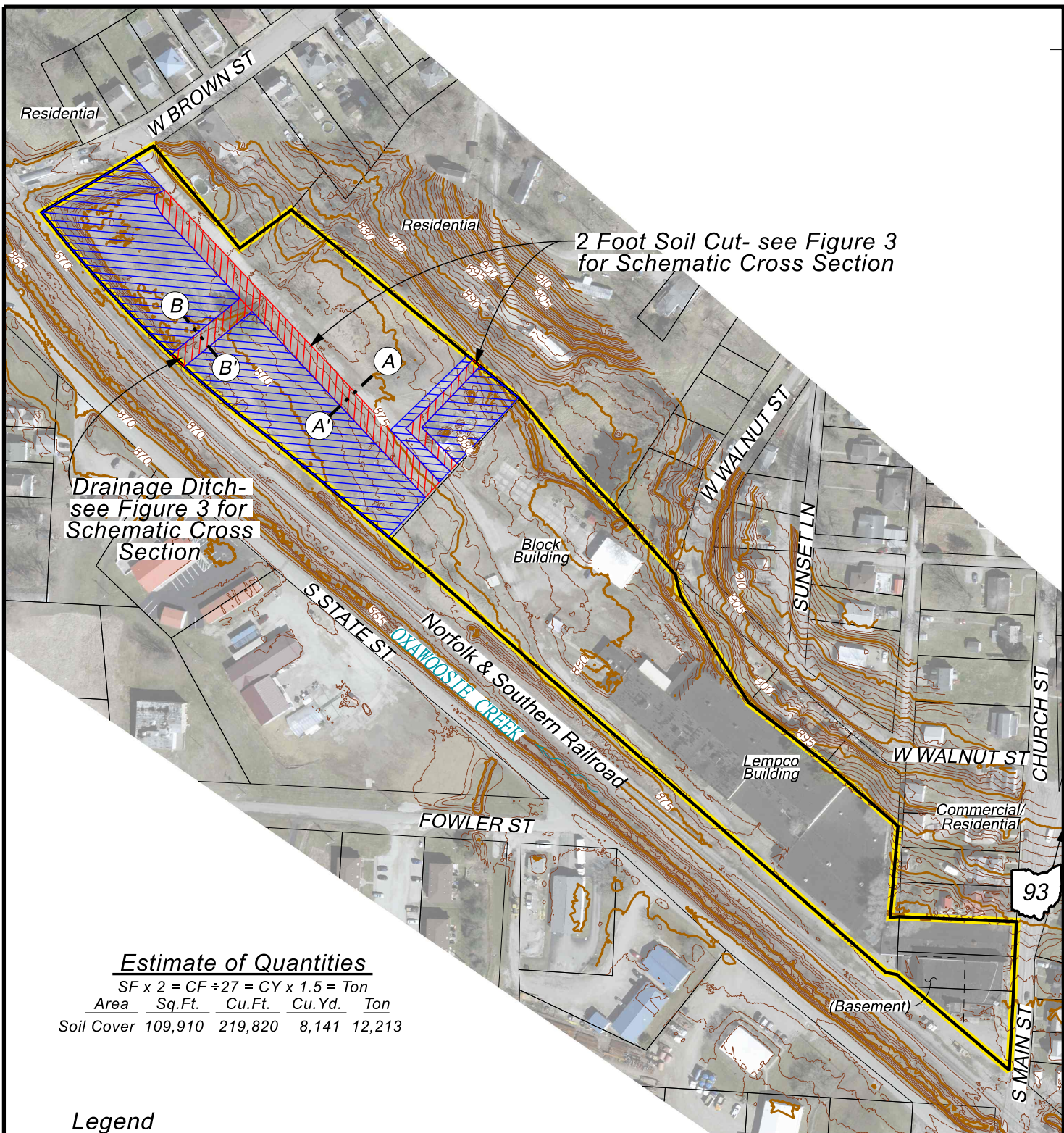
Former Lempco Industries  
526 S Main Street, New Lexington, Ohio 43764

Prepared by: U.S.G.S.

Date: August 2022

Project No. 21062




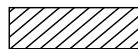


**Estimate of Quantities**

$SF \times 2 = CF \div 27 = CY \times 1.5 = Ton$

Area	Sq.Ft.	Cu.Ft.	Cu.Yd.	Ton
Soil Cover	109,910	219,820	8,141	12,213

**Legend**

-  Subject Property
-  Minimum Two-foot of Clean Soil Cover

**Notes**

- 1) Property Lines are from the Perry County GIS department dated August 2022.
- 2) Aerial Image is a 6 Inch County Mosaic dated 2021 from OGRIP.
- 3) 1 foot ground contour is from Lidar data dated 2021 from OGRIP.



0 100 200  
Scale in Feet



1000 S. Cleveland-Massillon Rd.  
Suite 106  
Akron, OH 44333  
Phone: (330) 668-4600  
Fax (330) 668-8464

**Figure 2 - Two-Foot Soil Cover Area**

Former Lempco Industries  
526 S Main Street, New Lexington, Ohio 43764

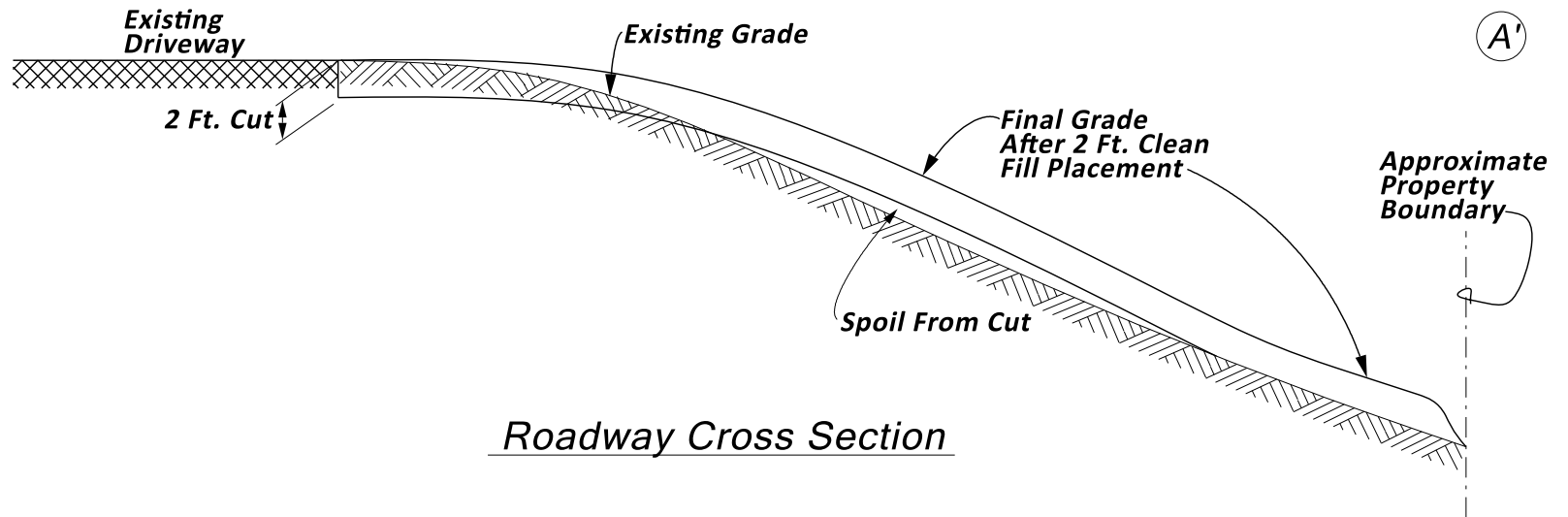
Prepared by: J. Smith      Date: May 2024      Project No. 21062

**NORTH**

**SOUTH**

(A)

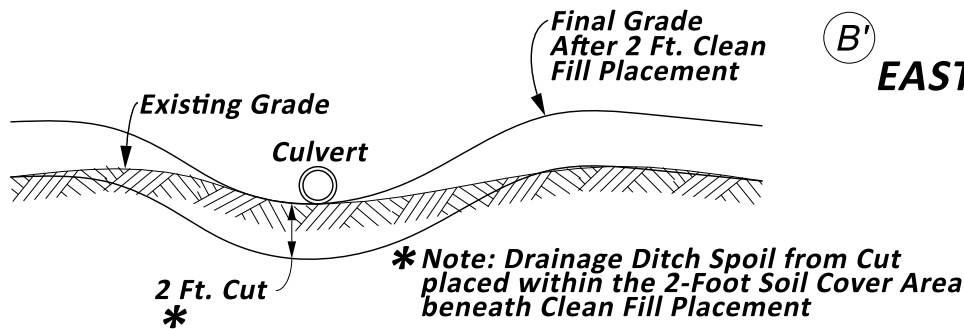
(A')



Roadway Cross Section

**WEST** (B)

(B') **EAST**



Drainage Ditch Cross Section



1000 S. Cleveland-Massillon Rd.  
 Suite 106  
 Akron, OH 44333  
 Phone: (330) 668-4600  
 Fax (330) 668-8464

**Figure 3 - Schematic Cross Section of 2 Foot Soil Cut**

Former Lemppo Industries  
 526 S Main Street, New Lexington, Ohio 43764

Prepared by: J. Smith

Date: May 2024

Project No. 21062